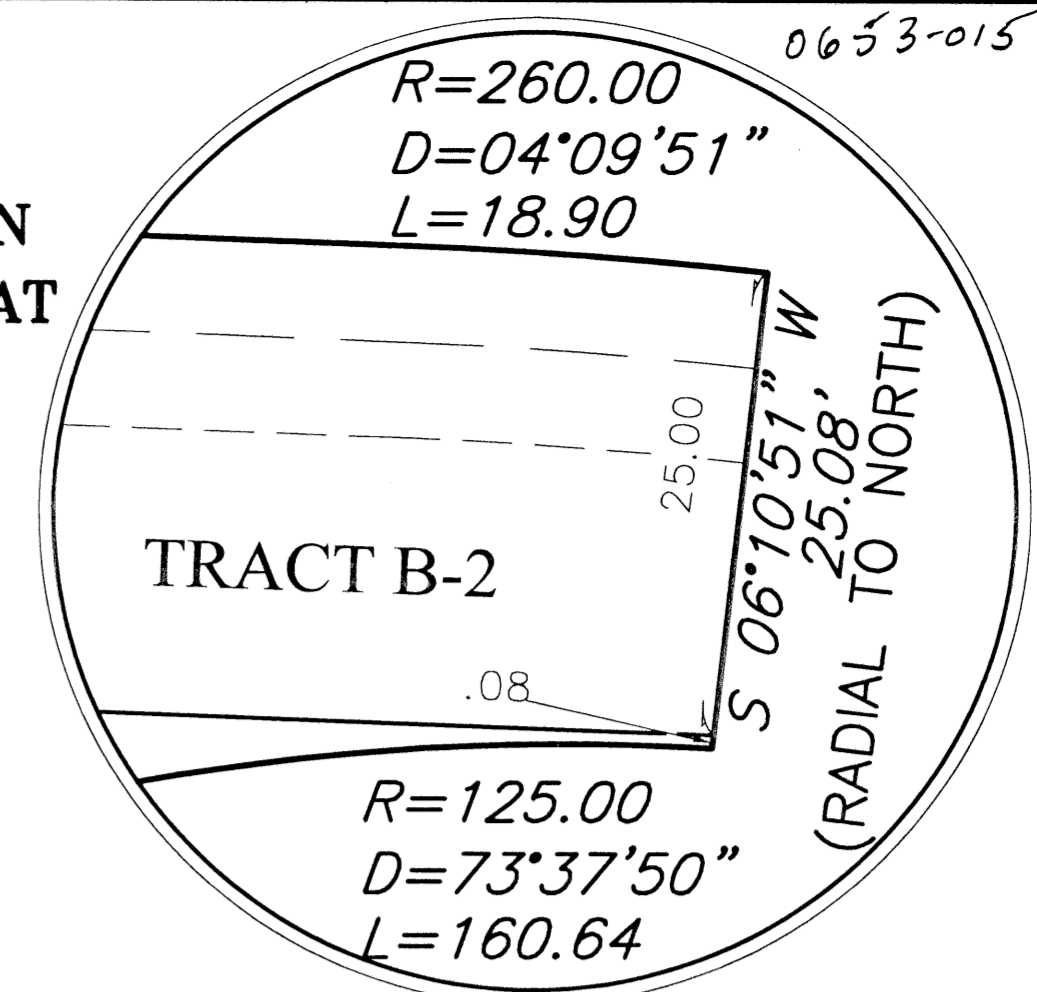
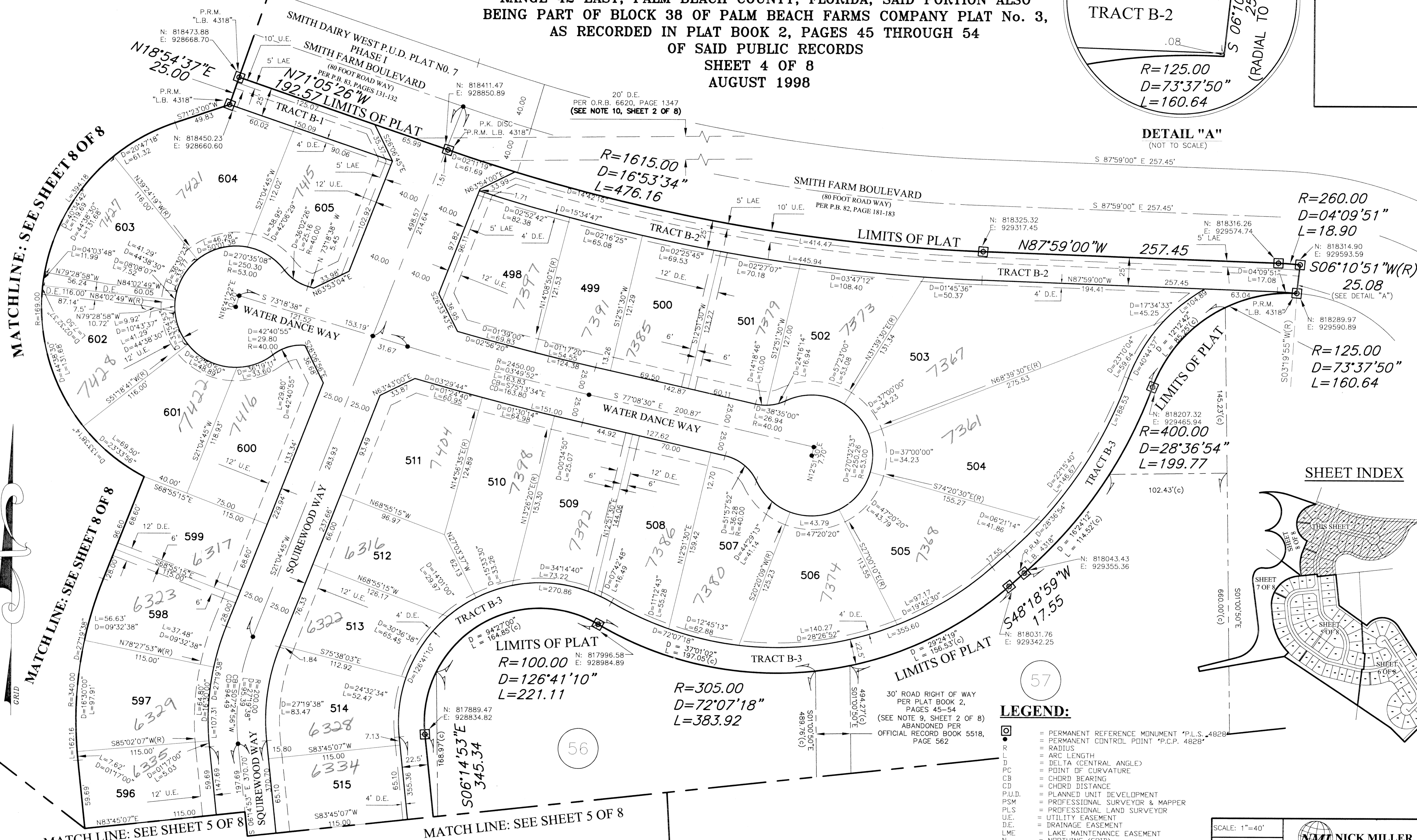


**SMITH DAIRY WEST P.U.D. - PLAT No. 7, PHASE II**  
 BEING A REPLAT OF ALL OF WATER MANAGEMENT TRACT No. 7, AS SHOWN ON  
 THE PLAT OF SMITH DAIRY WEST P.U.D. PLAT No. 4, AS RECORDED IN PLAT  
 BOOK 81, PAGES 170-176 OF THE PUBLIC RECORDS OF PALM BEACH  
 COUNTY, FLORIDA AND A PORTION OF SECTION 4, TOWNSHIP 45 SOUTH,  
 RANGE 42 EAST, PALM BEACH COUNTY, FLORIDA, SAID PORTION ALSO  
 BEING PART OF BLOCK 38 OF PALM BEACH FARMS COMPANY PLAT No. 3,  
 AS RECORDED IN PLAT BOOK 2, PAGES 45 THROUGH 54  
 OF SAID PUBLIC RECORDS

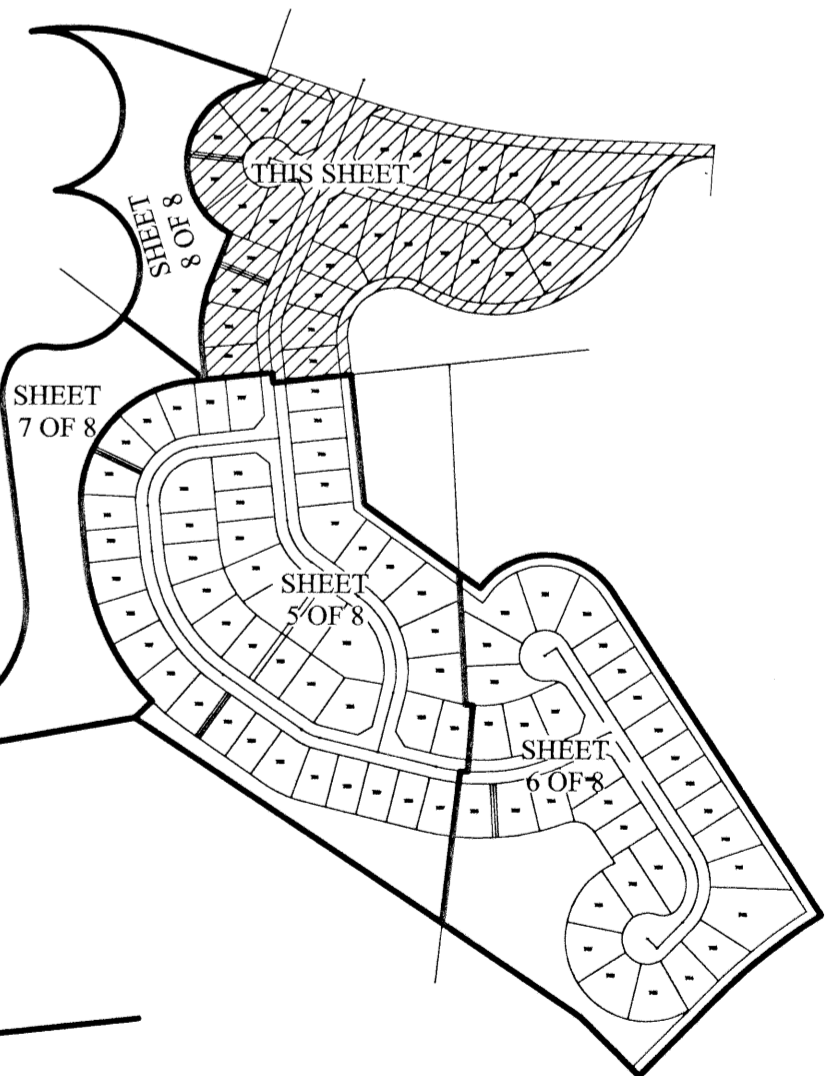
SHEET 4 OF 8  
 AUGUST 1998



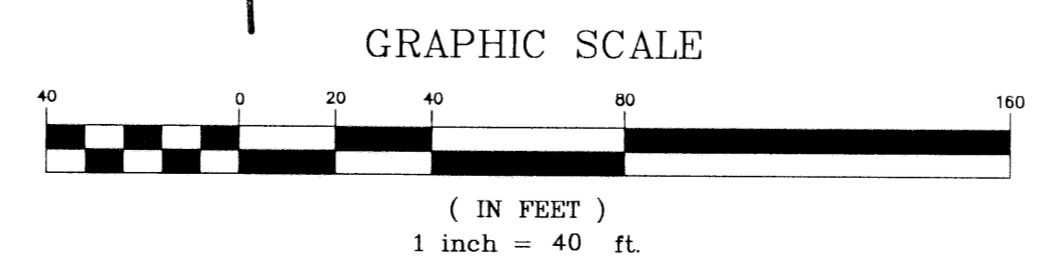
**78**



**SHEET INDEX**



- LEGEND:**
- ◻ = PERMANENT REFERENCE MONUMENT "P.L.S. 4828"
  - = PERMANENT CONTROL POINT "P.C.P. 4828"
  - R = RADIUS
  - L = ARC LENGTH
  - D = DELTA (CENTRAL ANGLE)
  - PC = POINT OF CURVATURE
  - CB = CHORD BEARING
  - CD = CHORD DISTANCE
  - P.U.D. = PLANNED UNIT DEVELOPMENT
  - PSM = PROFESSIONAL SURVEYOR & MAPPER
  - PLS = PROFESSIONAL LAND SURVEYOR
  - U.E. = UTILITY EASEMENT
  - D.E. = DRAINAGE EASEMENT
  - LME = LAKE MAINTENANCE EASEMENT
  - N = NORTHING (GRID)
  - E = EASTING (GRID)
  - (C) = CALCULATED
  - (R) = RADIAL
  - LAE = LIMITED ACCESS EASEMENT
  - L.B. = LICENSED BUSINESS
  - P.R.M. = PERMANENT REFERENCE MONUMENT
  - TRACT NO. 57, BLOCK 38, PALM BEACH FARMS COMPANY PLAT No. 3 (PER PLAT BOOK 2, PAGE 45-54)



SCALE: 1"=40'		<b>NICK MILLER, INC.</b> Surveying & Mapping Consultants
DATE: AUGUST 1998		
<b>SMITH DAIRY WEST P.U.D. - PLAT No. 7, PHASE II</b>		
2560 RCA Blvd., Suite 105 Palm Beach Gardens, Florida 33410 (561) 627-5200 D.B.P.R. Business License No. 4318	DRAWING NUMBER	<b>94014CR</b>

Smith Dairy West  
 Plat 7, Phase II  
 BOOK 84  
 FLOOD ZONE B  
 ZONING PUD  
 GLASS# 49  
 SB 94-77  
 TWD 942  
 PUB NAME Smith Dairy West

Revised  
 8/21/98